



Fulmar is a multi-purpose offshore crew transfer vessel designed to transport personnel and equipment to and from offshore wind farms.

Built in the UK, the OEG Fulmar is a Chartwell designed, Ambitious Class crew transfer vessel (CTV). The vessel is lightweight, efficient, and adaptable with provision for 2x 10ft containers on the spacious foredeck.

Powered by two MAN V12 1400hp engines, the Fulmar offers exceptional manoeuvrability and fuel efficiency.

Delivered to the market in January 2026, this vessel will be perfect for construction and O&M projects in the offshore wind industry.

Key benefits

- Cruising speed of 23 knots for reduced transit time to windfarm sites
- Fuel capacity of 16 tonnes
- Seating for 24 technicians
- Large deck area of 70m² with provision for 2x 10ft containers
- Internal storage for client tools & equipment

Description and features

General specification

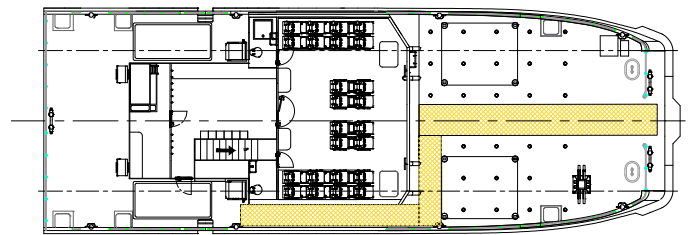
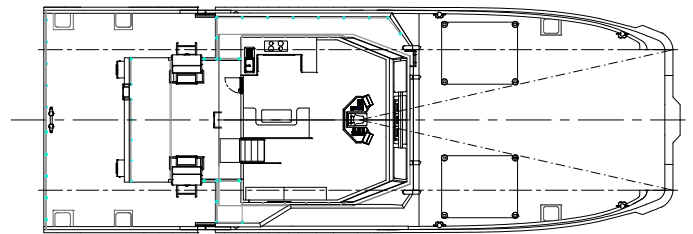
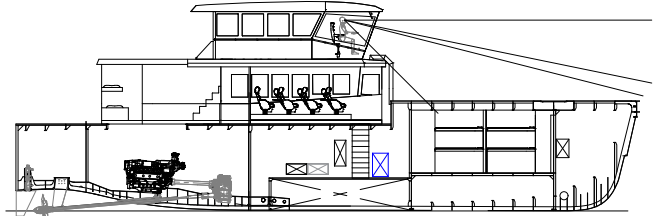
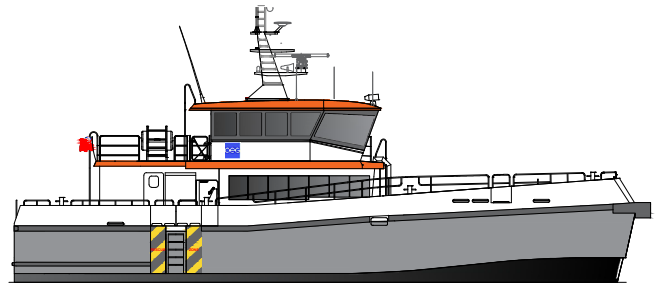
Length overall:	25.1 metres
Beam:	8.7 metres
Operational draft:	1.8 metres
Material:	Aluminium
Deck space:	70 m ²
Service speed:	23 knots
Max. speed:	27 knots
Fuel capacity:	16,000 litres
Fresh water cap.:	1,500 litres
Cargo capacity:	15 tonnes

Machinery

Main engines:	2 x MAN D2862
Propulsion:	2 x FPP
Deck crane:	TMP 900XL

Classification

Class notation:	BV Windfarm Service Ship
Flag coding:	UK Cat 2 HS-OSC
Personnel:	24 pax



Can't find what you are looking for?

Contact our global sales team at enquiries.marine@oeg.group or visit our website to find your regional representative at [oeg.group](https://www.oeg.group)

E & OE – All dimensions and weights are accurate at the time of creation. Please check exact specifications of units with your local representative when ordering.

