

Carboclyde



Carboclyde is a multi-purpose offshore crew transfer vessel designed to transport personnel and equipment to and from offshore wind farms.

Carboclyde was built in 2010 and is one of the first carbon fiber reinforced polymer (CFRP) vessels to work in the market.

Built in Sweden, the vessel has a length of 24m, is fully classed and can carry up to 24 passengers. Carboclyde has been transferring personnel in offshore wind since 2010 and has supported many construction and O&M campaigns in northern Europe, as well as coastal construction and survey projects.

Key benefits

- 24 seats for crew transfer
- Very low draft for shallow sea areas and tidal ports
- Low fender height, able to access low boat land structures and pontoons
- Lightweight carbon fiber hull for minimum impact loads at boat landings while providing competitive deadweight
- Highly maneuverable with jet propulsion

Description and features

General specification

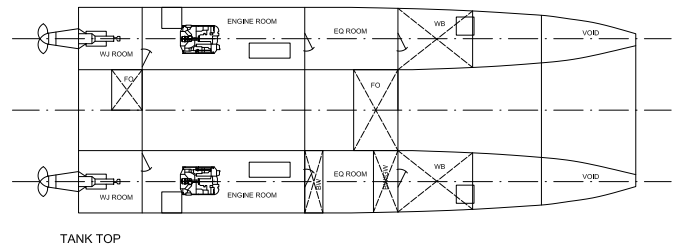
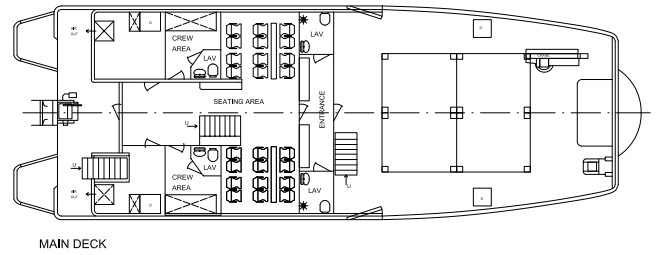
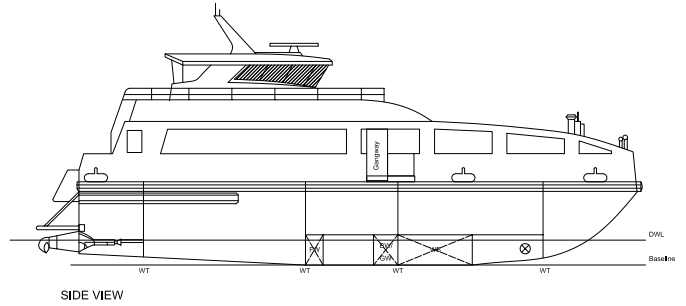
- Length overall:** 25.53m
- Beam:** 8.63m
- Draft:** 1.5m max / 0.9 m min.
- Passengers:** 24 Passengers / 2 Crew
- Tonnage:** 142 GRT / 42 NRT
- Tank capacities:** 8000 l MGO / 1000 l Fresh water
- Speed max / service:** 27 knots / 23 knots
- Consumption:** 300 litre / h (Service)
- Range:** 510 nm

Machinery

- Main engines:** 2x MTU 2000 M72
- Power:** 2x 720 kW
- Auxiliary engines:** 2x Northlight 20-25 kW
- Propulsion:** 2x Hamilton Waterjet
- Bow thruster:** Yes
- Deck crane:** 1 x Palfinger 15500 Marinecrane
- Safe working load:** 14.6 mts@m

Classification

- Class notation:** RINA C+ (light ship) special service CTV, sp. nav.
- Flag / coding:** Germany



Can't find what you are looking for?

Contact our global sales team at enquiries.marine@oeg.group or visit our website to find your regional representative at oeg.group

E & OE - All dimensions and weights are accurate at the time of creation. Please check exact specifications of units with your local representative when ordering.

