



Key benefits

- Cruising speed of 21 knots for reduced transit time to windfarm sites
- Fuel capacity of 30 tonnes
- Seating for 24 technicians
- Large deck area of 90 m²
- Quad-waterjets for draft restricted areas
- Suitable for cargo transfer to transition piece

Vivace is a multi-purpose offshore crew transfer vessel designed to transport personnel and equipment to and from offshore wind farms.

Currently operating in the UK, the vessel has a cargo carrying capacity of 30 tonnes and is capable of reaching in excess of 26 knots at full speed. The Vivace is the original StratCat26 design, featuring four engines and waterjets to deliver services in draft restricted areas.

The vessel has been utilized for the construction of different windfarms and long term O&M contracts.

Description and features

General specification

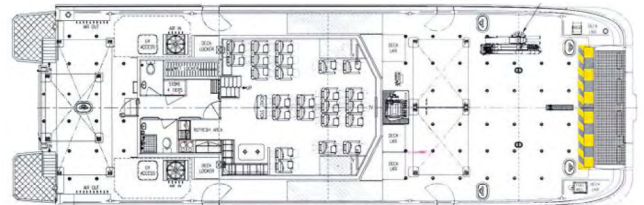
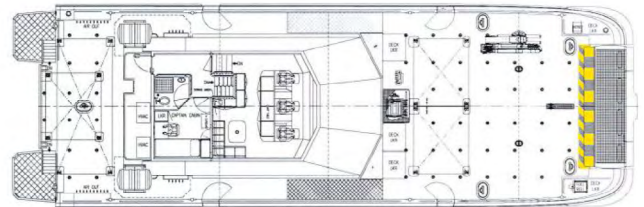
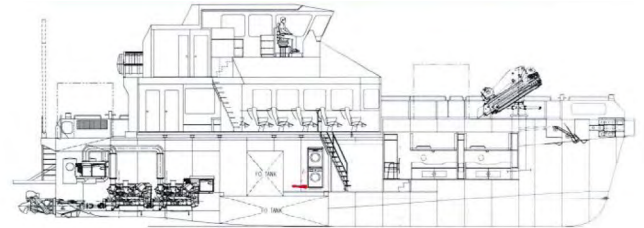
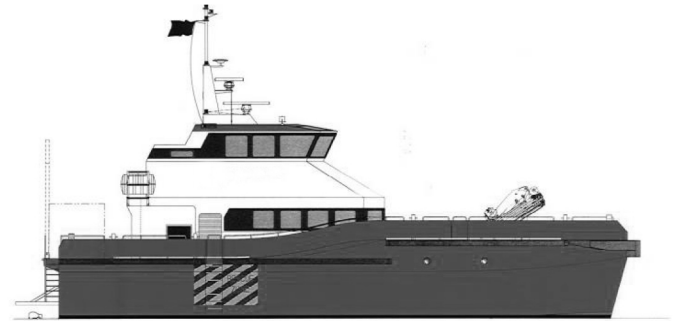
Length overall:	27,5m
Beam:	8,9m
Operational draft:	1,2m
Extreme draft:	1,5m
Material:	Aluminium
Service speed:	21 knots
Maximum speed:	26 knots
Fuel capacity:	35,000 litres
Fresh water capacity:	3,000 litres
Cargo capacity:	30 tonnes

Machinery

Main engines:	4 x Caterpillar C18
Propulsion:	4 x Hamilton WaterJet HM521
Deck crane:	Palfinger PK 23500M 21.4t crane

Classification

Class notation:	LR
Flag / coding:	UK HS-OSC
Personnel:	24



Can't find what you are looking for?

Contact our global sales team at enquiries.marine@oeg.group or visit our website to find your regional representative at [oeg.group](https://www.oeg.group)

E & OE – All dimensions and weights are accurate at the time of creation. Please check exact specifications of units with your local representative when ordering.

