

Wotan



Wotan is a multi-purpose offshore crew transfer vessel designed to transport personnel and equipment to and from offshore wind farms.

The Wotan is a Windflex-27 design from Incat Crowther, the first of this design to be built by Penguin Shipyard.

A large working deck forward can accommodate up to 2 x 10ft containers or 1 x 20 ft and is equipped with a deck crane. The aft deck can accommodate a 10ft container. Both decks feature multiple tie-down points for flexibility. Specifically built for supporting offshore wind farms, the Wotan currently operates in Taiwan with a carrying capacity of 50 tonnes with a speed of up to 26 knots.

Key benefits

- Cruising speed of 21 knots for reduced transit time to the windfarm
- 35,000 litre fuel capacity for increased endurance offshore
- Rapid refuelling rate of 150ltr/min for OSS and temporary power generator sets
- Large passenger cabin with 24 seats and ample storage
- Large foredeck, 2 x 10ft container lashing points
- Active fender system to reduce impact loading
- Very low draft for shallow sea areas and tidal ports
- Highly maneuverable with jet propulsion, able to sail with <1 kn

Description and features

General specification

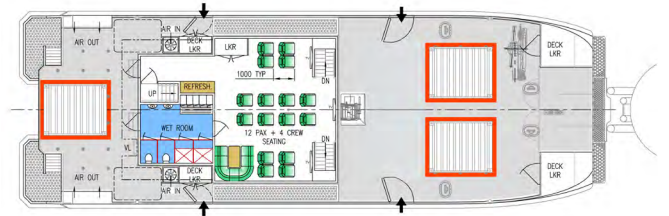
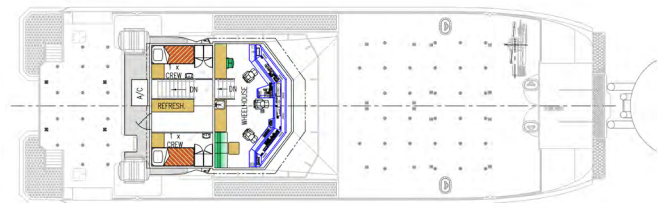
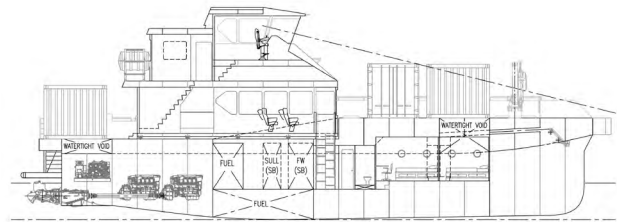
Vessel type:	Catamaran
No. of PAX:	24
Length overall:	27.1m
Beam overall:	9m
Operational draft:	1.4m
Extreme draft:	1.6m
Hull material:	Aluminium
Service speed:	21 knots
Maximum speed:	26 knots
Fuel transfer capability:	Yes
Fuel capacity:	35,500 litres
Fresh water capacity:	3,500 litres

Machinery

Engines:	4 x Scania DI16 077M – 662 kW
Propulsion:	4 x Hamilton HM521 WaterJet Including JETanchor – uncertified DPO station keeping
Deck crane:	Palfinger PK 23500M

Classification

Classification and notation(s):	BV in compliance with Taiwanese CR class
Flag / coding:	Taiwanese Flag



Can't find what you are looking for?

Contact our global sales team at enquiries.marine@oeg.group or visit our website to find your regional representative at oeg.group

E & OE – All dimensions and weights are accurate at the time of creation. Please check exact specifications of units with your local representative when ordering.

